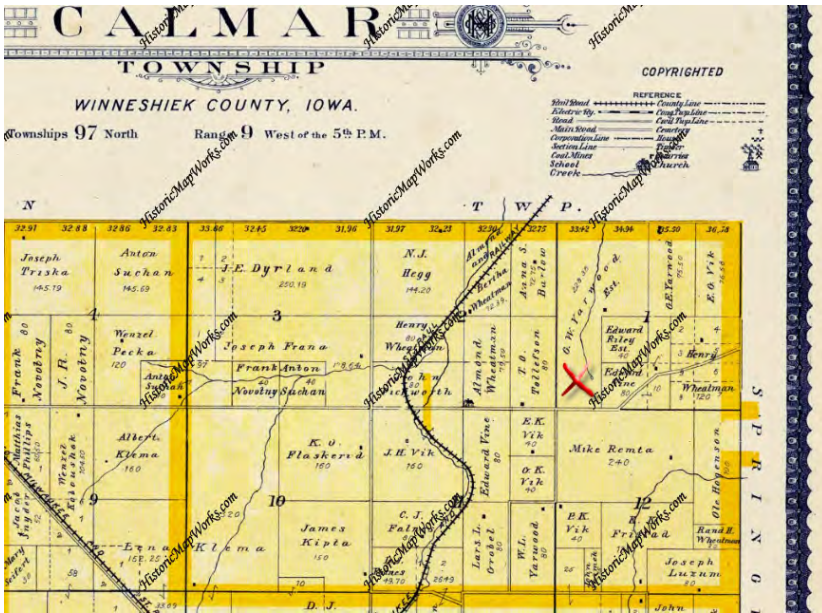
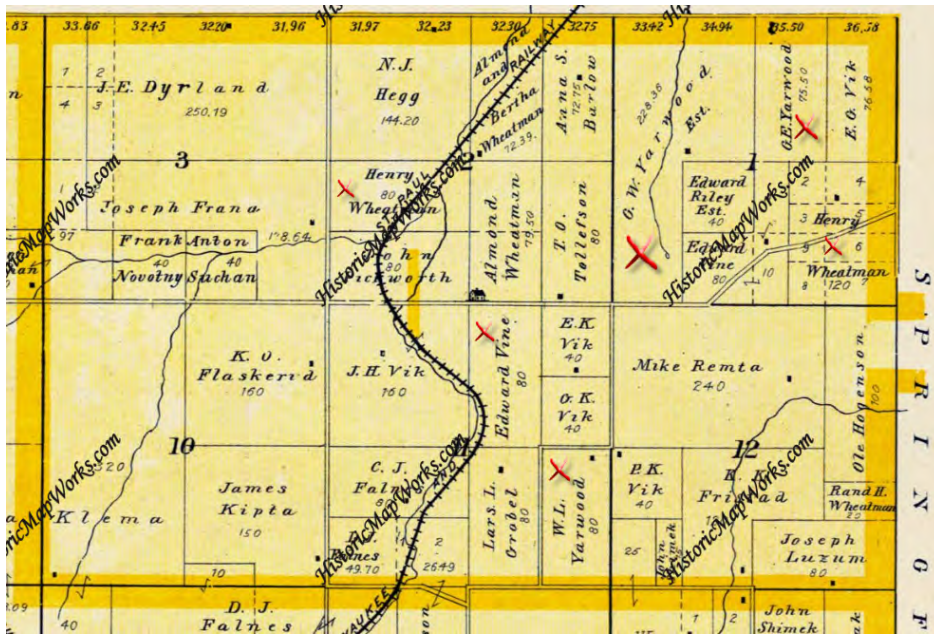


I found this Googling around looking for the location of the George W Yarwood farm. It was in the Calmar Township, Section One. This is suppose to be from 1907.

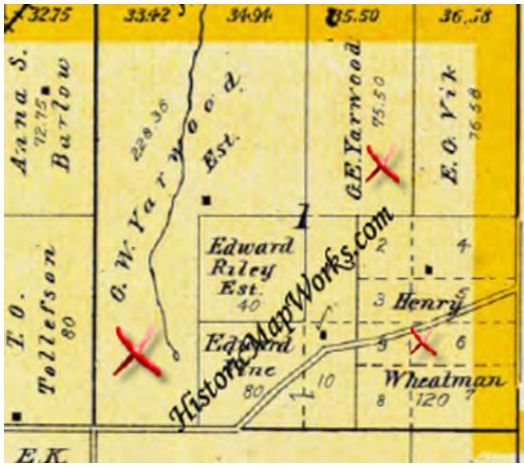
Scroll down for larger views.



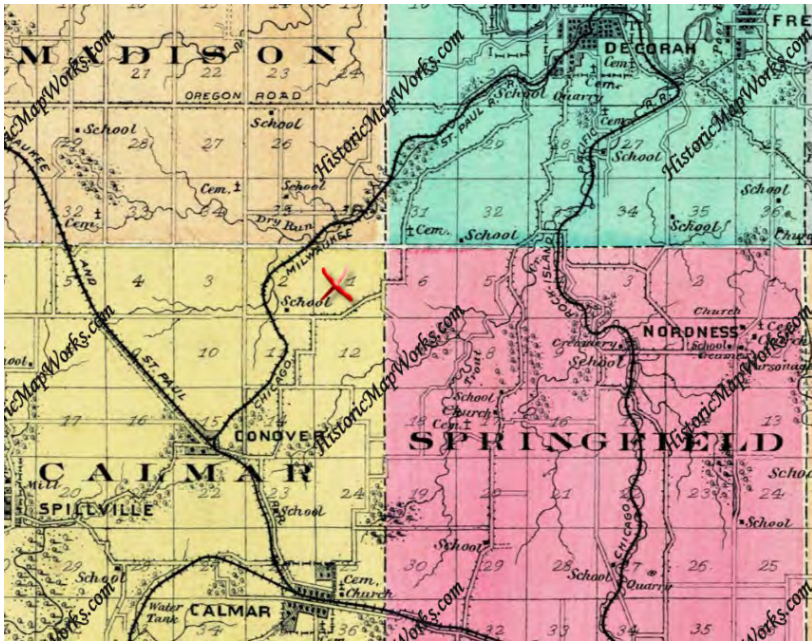
A little larger view.



Note the names that I've marked.

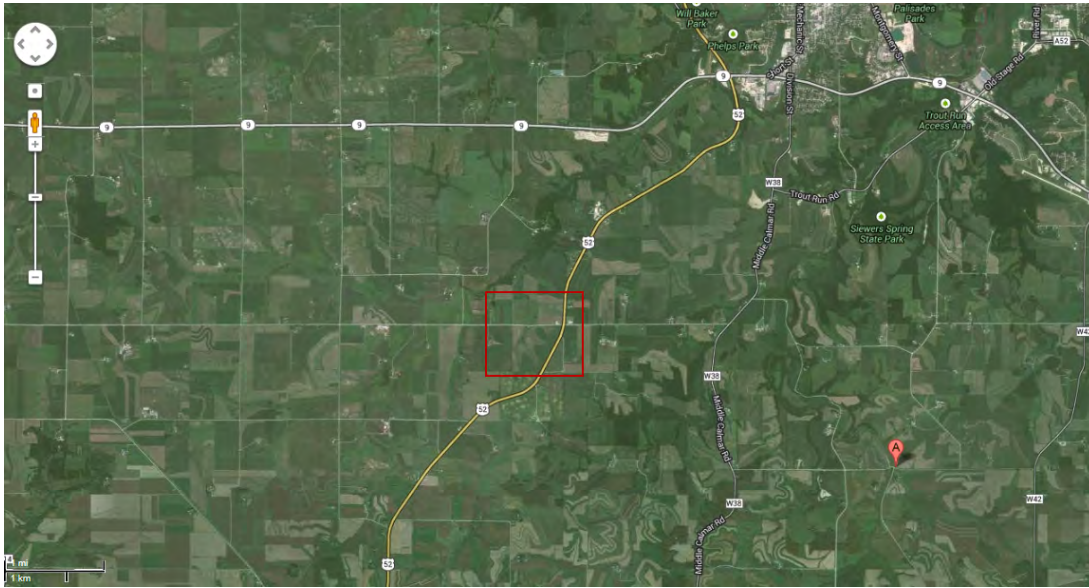


This shows the acreage of 228.35 and 75.50, totaling 303.85 acres. That was a pretty large farm for one to own in that time.



This show the location relative to Decorah, Calmar, Spillville, Conover and Nordness.

My father farmed some where near Nordness and I believe that is where Mom and Dad lived when I was born. I'll try to find that place also.



The square, I believe is about where the George W. Yarwood farm was. See the next page.



I know where this cemetery is in the upper right corner. A cemetery is shown the fourth page of this document.